

Pattern of Road Crashes in Lusaka

Dr Robert Zulu

Consultant Gen Surgeon

University Teaching Hospital

Honorary Lecturer School of Medicine UNZA

Introduction

- ▶ Trauma is a public health problem
- ▶ Public health institutions have limited resources

Introduction



Introduction



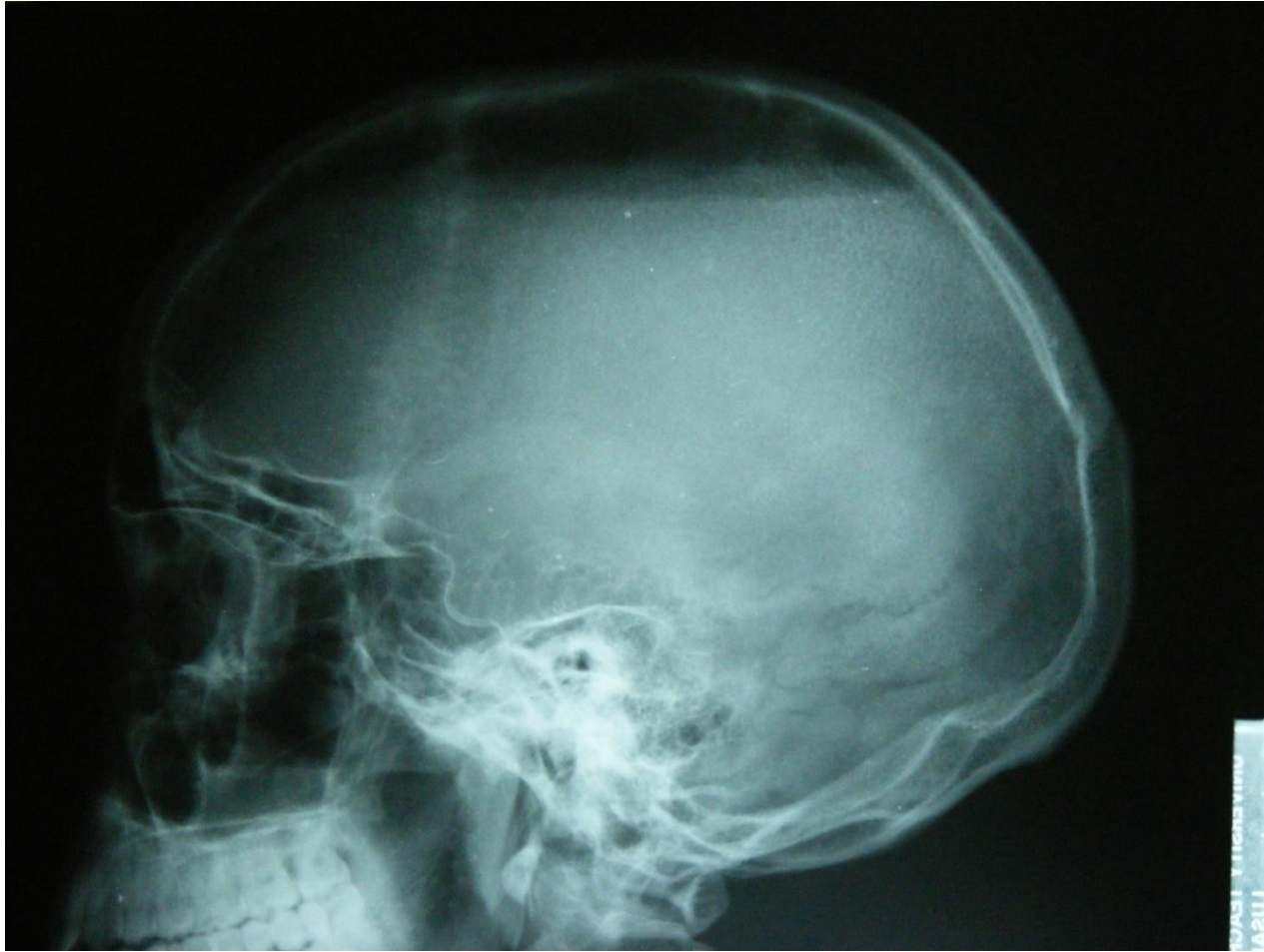
Introduction



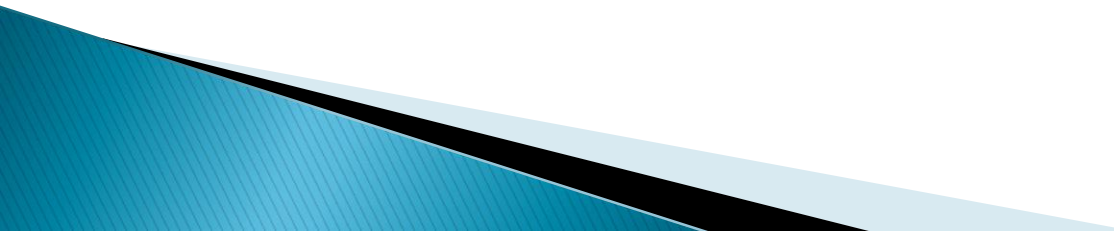
Introduction



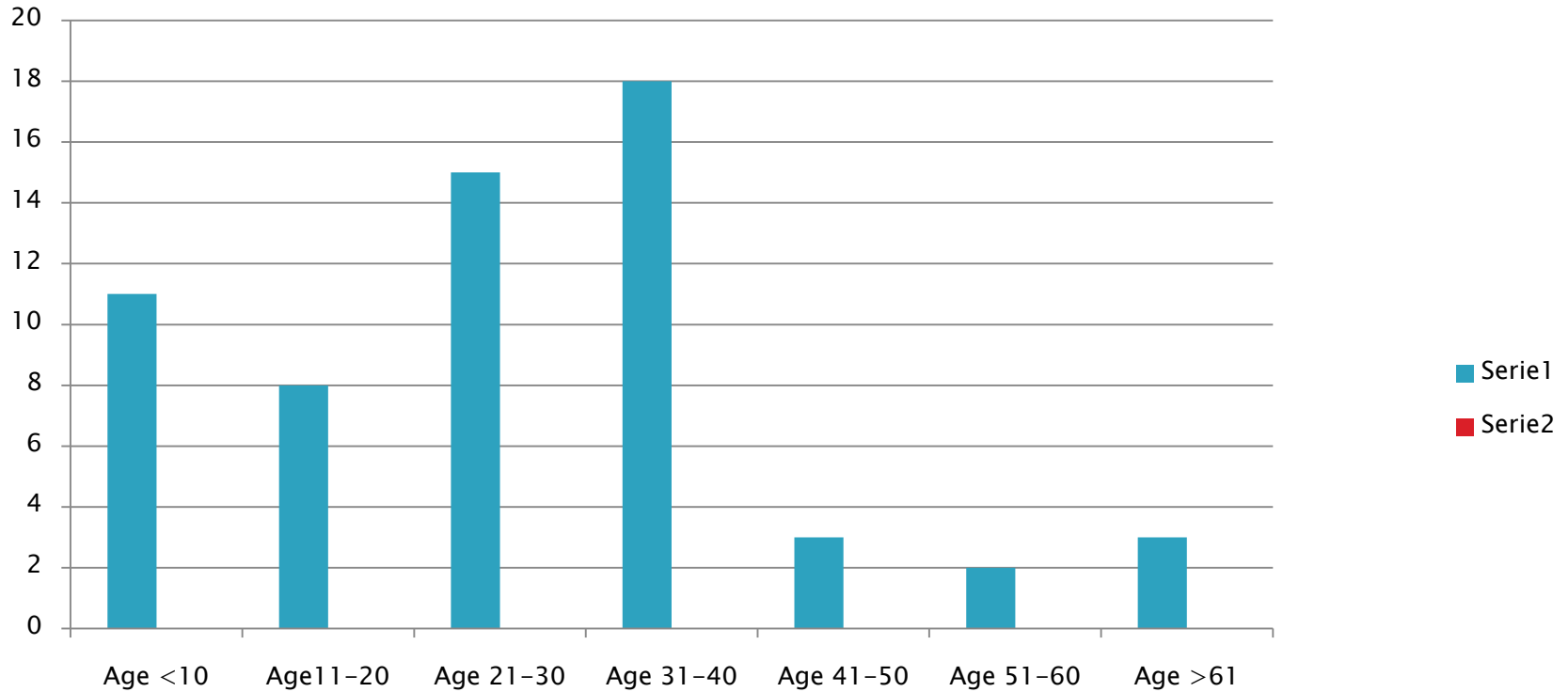
Introduction



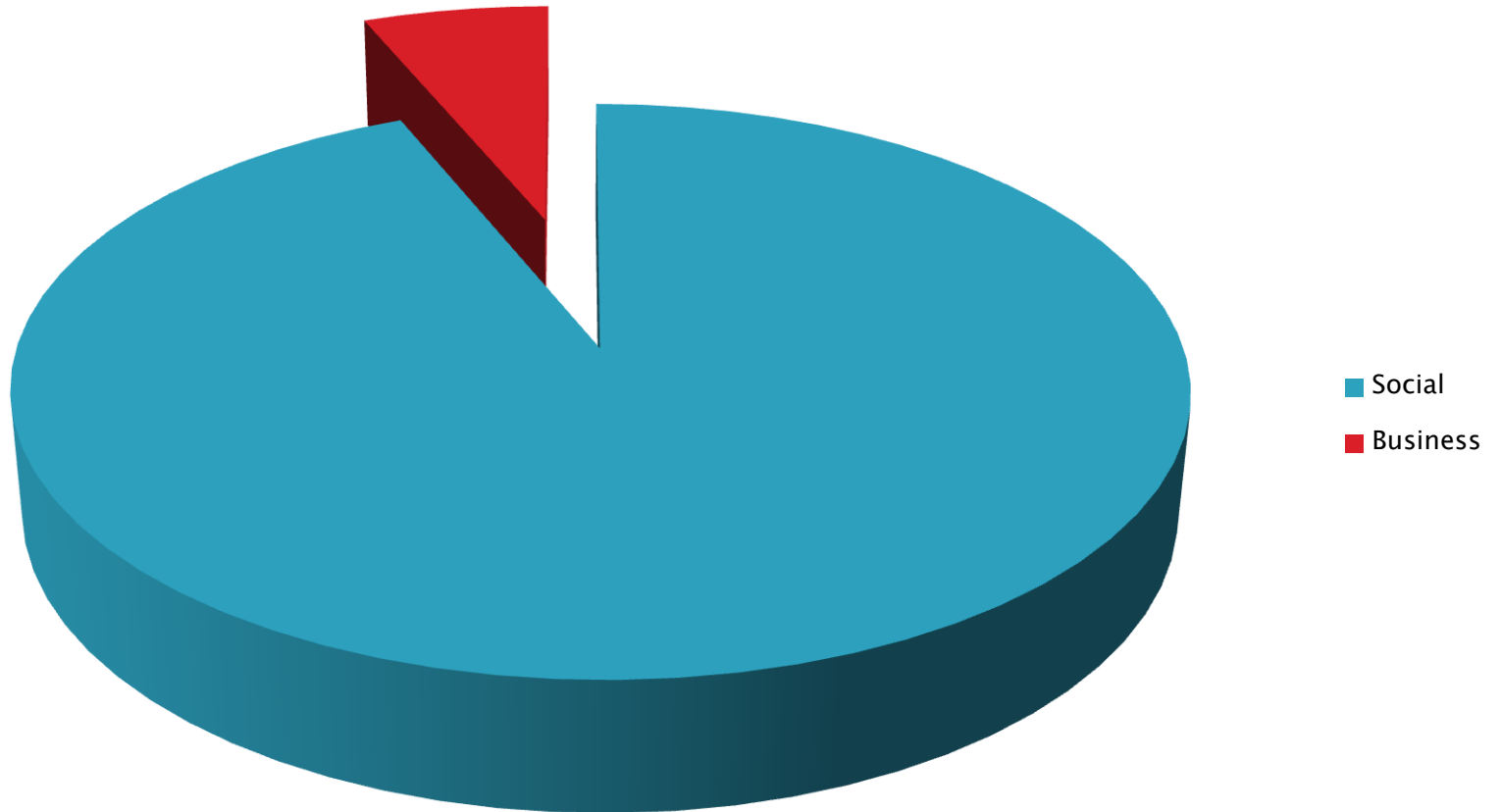
Survey

- ▶ Age distribution
 - ▶ Sex Distribution
 - ▶ Destination (Business/Social)
 - ▶ Time of presentation
 - ▶ Type of injury (Assault/Road Crash)
 - ▶ Mode of injury
- 

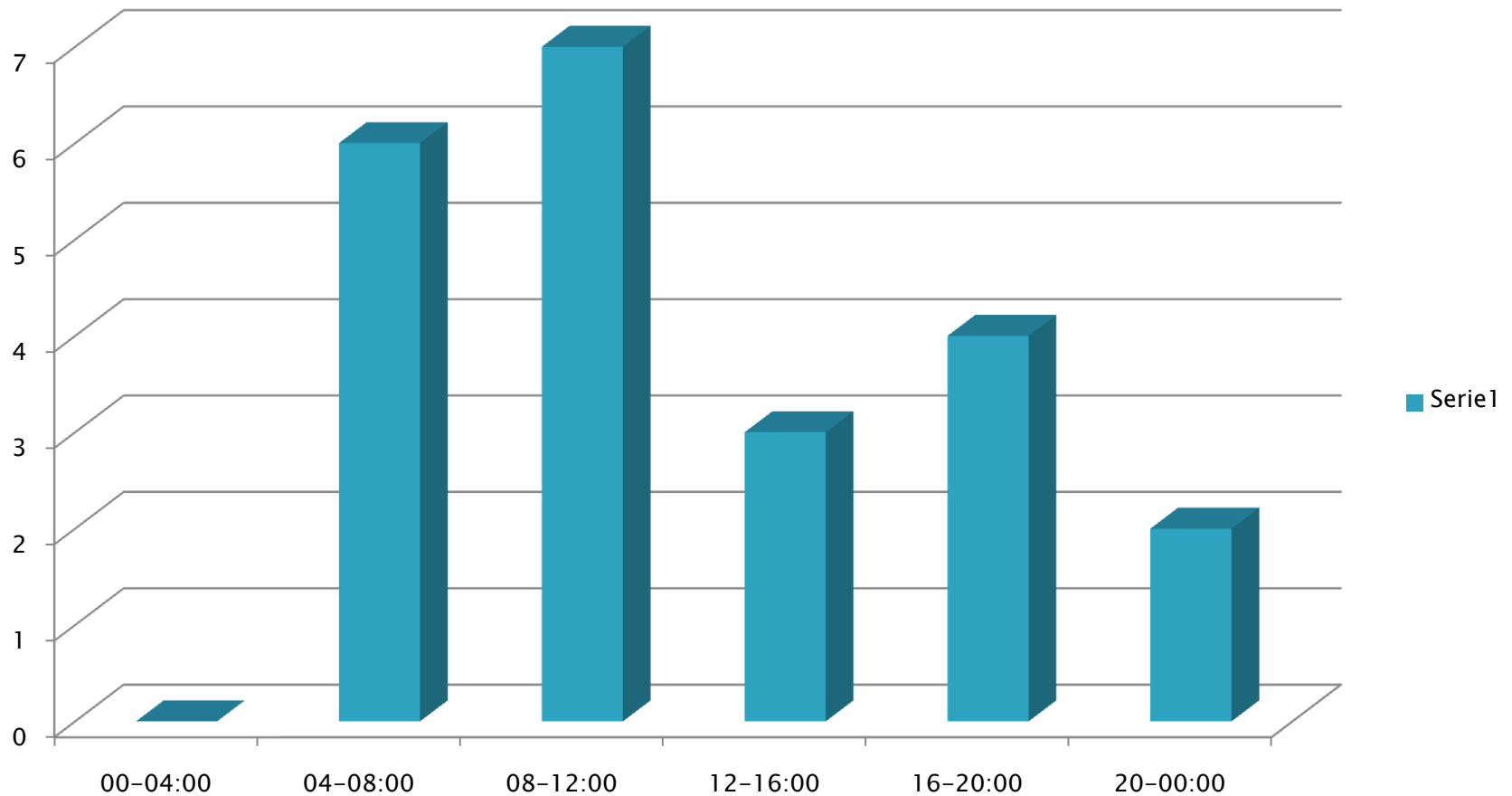
Age Distribution



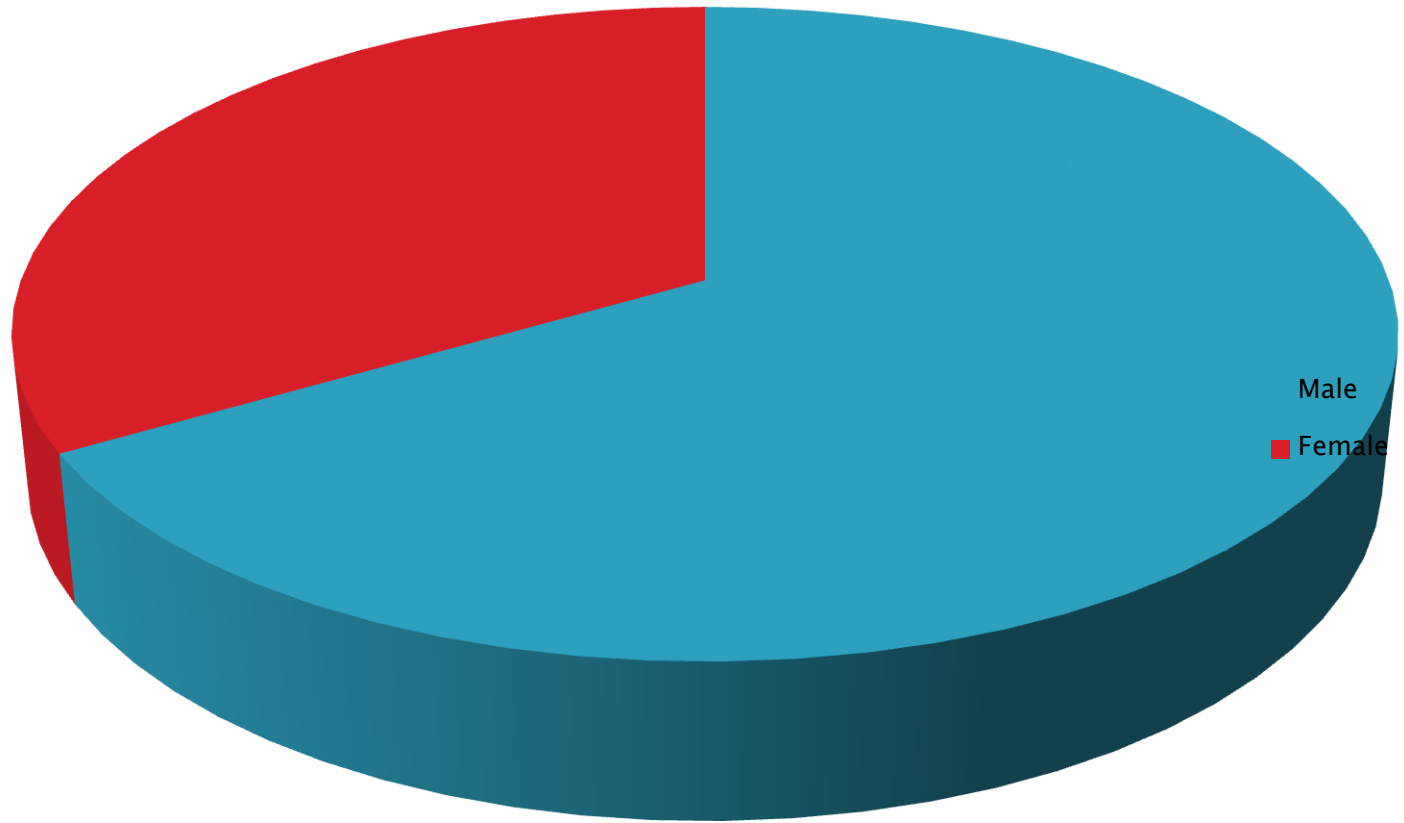
Destination



Time of presentation



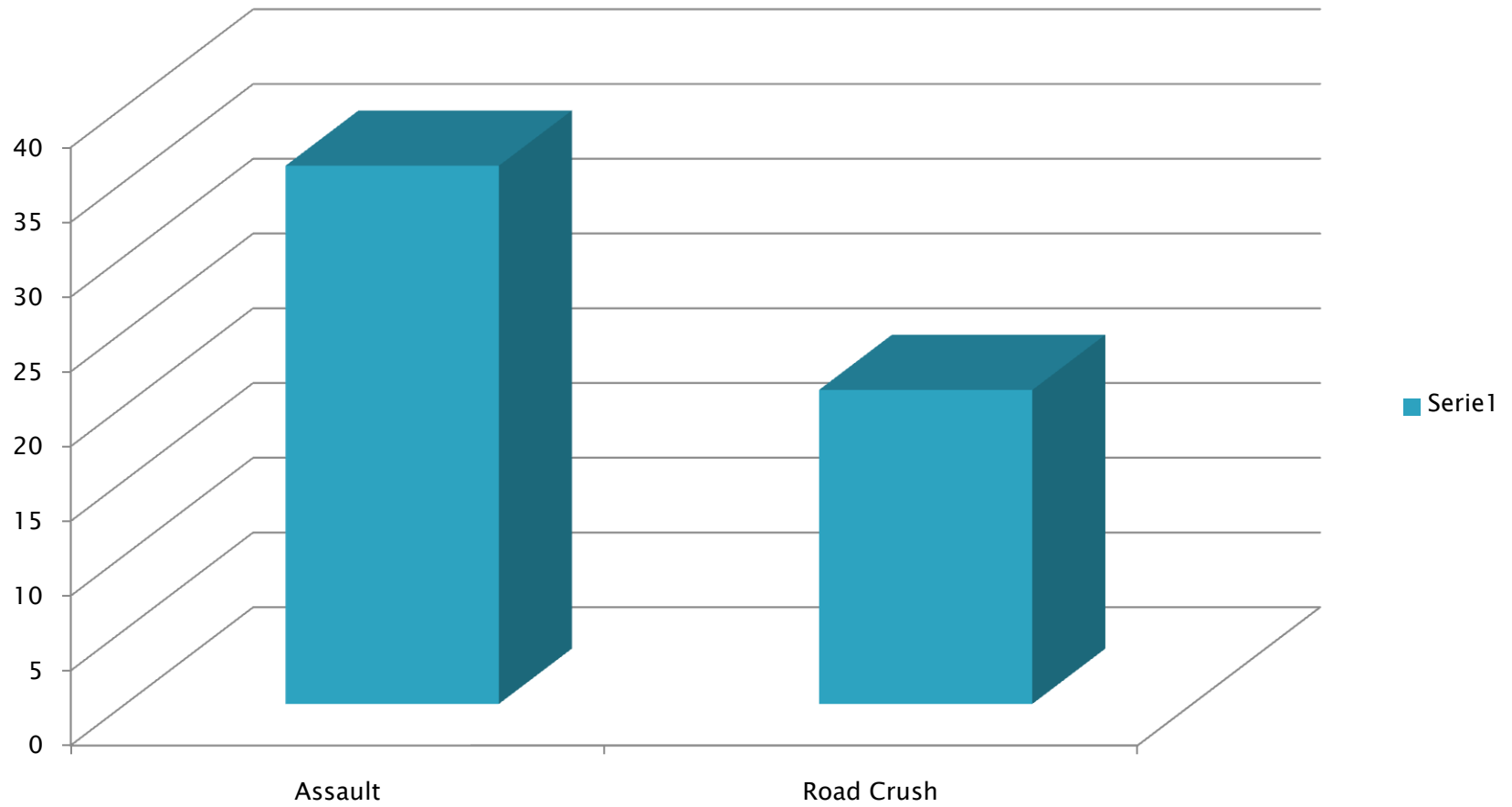
Sex distribution



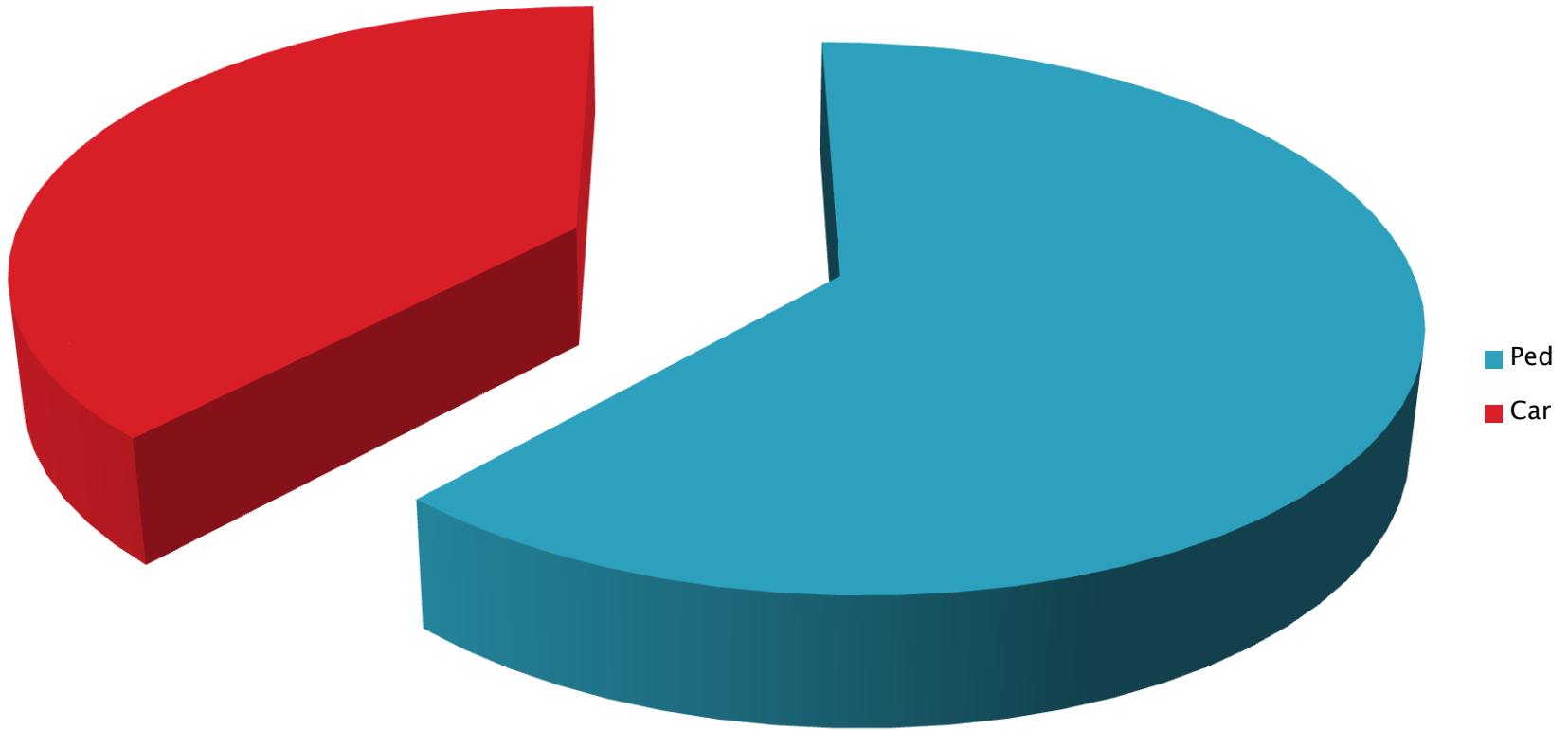
Type of Injuries



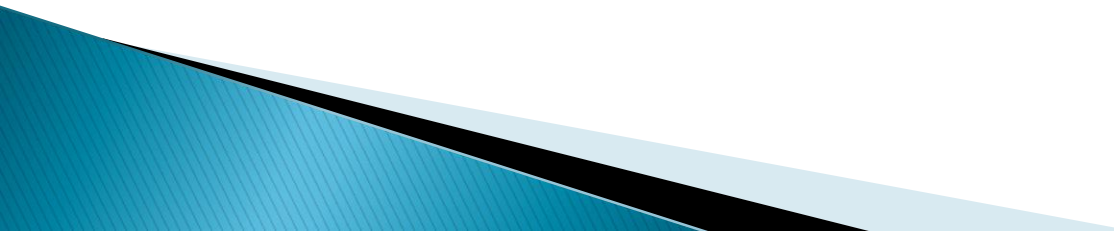
Injuries



Mode of injury



Conclusion

- ▶ Sex distribution: Intervention should aim at Men
 - ▶ Pedestrians are victim
 - ▶ Most Road Traffic Crashes are not Accidents, they are preventable
 - ▶ Road Crashes are a health problem and needs concerted efforts from all stake holders
- 

Recommendation

- ▶ Alcohol use and driving?
- ▶ Cyclist ways?
- ▶ Walk ways?
- ▶ Communication amongst the stake holders?

Thank you for your attention!